

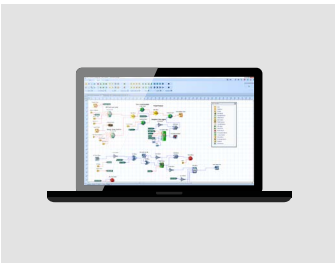
Resource  
Data Management

# TDB

## Programmable logic control software from RDM

TDB is the highly flexible PLC (programmable logic control) software from Resource Data Management that can easily be configured in an almost infinite number of ways to precisely meet your control requirements.

The TDB Desktop Editor software is free to download for Microsoft Windows® and is compatible with our DMTouch and Intuitive TDB device platforms.

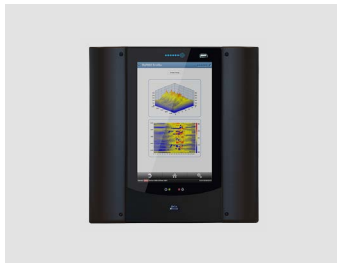


### TDB Desktop Editor (Free)

Our free standalone Desktop Software gives you the ability to create virtual devices, and custom control algorithms for any conceivable application.

It supports up to 10,000 blocks per program and includes a number of features unavailable on TDB device editors.

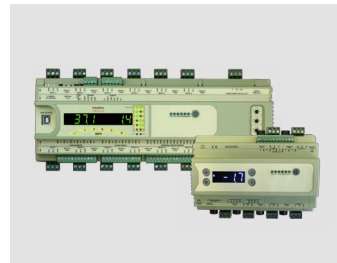
- ✓ Simulate control programs
- ✓ Export diagrams and data
- ✓ Over 90 built-in blocks
- ✓ Define custom blocks



### DMTouch

The future proof control and remote monitoring system front-end, DMTouch, includes a free trial of TDB built-in and can be activated to include Lite or Full TDB support.

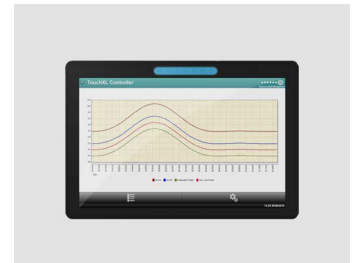
DMTouch can support up to 16 simultaneous TDB programs with 4,096 blocks per program.



### Intuitive TDB Controllers

Intuitive TDB and Intuitive Mercury TDB controllers, designed from the ground up for TDB, are each built to manage a single TDB program.

The flagship Intuitive TDB controller and Intuitive Mercury TDB can host programs with upto 10,000 and 2,000 individual blocks respectively.



### TouchXL TDB Controller

The TouchXL Controller is a stand alone device for connecting your control and monitoring infrastructure to, performing the role of TDB controller and user interface in one package.

The TouchXL Controller removes the need for a front-facing DIN rail mounted device and accompanying display while expansion via CANbus can enable the TouchXL Controller model to increase its control and monitoring capacity.

# TDB Desktop Editor

The newest, smartest TDB Editor represents a major advancement with improved user interface design and layout. It's now even easier to access key features and reduce programming time. Plus, expansion boards and daughter cards now offer additional opportunities to enhance the existing capabilities of the DMTouch, Intuitive and Mercury platforms.

Multiple TDB programs can be opened in a single TDB Desktop Editor session, streamlining program management. Users can also separate single programs in to multiple pages, simplifying and reducing development time.



## Features

- 

**Copy and paste between programs**
- 

**User-defined custom blocks**
- 

**Create programs across tabs/pages**

## On Device Editors

By connecting to TDB devices locally, engineering staff can design, build and run their own TDB programs without downloading the full desktop editor software.

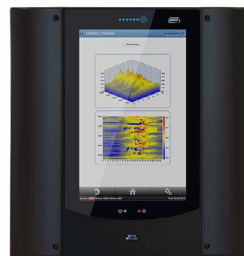
We've specifically developed our range of TDB Enabled\* products (including the DMTouch, Intuitive TDB Controller, Intuitive Mercury TDB Controller, and TouchXL TDB Controller) to be capable of fulfilling the most demanding of **HVACR** (heating, ventilation, air conditioning, refrigeration) and **BEMS** (building energy management system) applications.

Each of our TDB products was designed with a different size and scale of solution in mind – use our comparison table (right) to decide what's best for you.

Platform	Simultaneous Programs	Block Count (Per Program)
DMTouch	16	4,096
DMTouch (Lite)	1	100
Intuitive TDB	1	10,000
Intuitive Mercury TDB	1	2,048**
TouchXL TDB Controller	1	10,000
Desktop	Not applicable	up to 10,000

\*DMTouch products require TDB activation (PR0485/PR0485-Lite)

\*\*Dependent on block types used



Download TDB Desktop Editor for free at:  
[resourcedm.com/software](http://resourcedm.com/software)